

FEATURES & SPECIFICATIONS

INTENDED USE — Ideal for applications requiring low-profile, attractive emergency lighting with Optional normally-off or normally-on with photocell control. Provides a minimum of 90 minutes of illumination both indoors and outdoors upon loss of AC power. **Certain airborne contaminants can diminish the integrity of acrylic and/or polycarbonate. Click here for Acrylic-Polycarbonate Compatibility table for suitable uses.**

CONSTRUCTION — Compact, low-profile, architectural design with die-cast aluminum housing. Finishes are textured powder coat paint for dark bronze and white. Test switch indicator light and remote enabled are located on the bottom of the housing and are easily accessible and visible from the floor.

OPTICS — LEDs with L70 of 55,000 hours. Delivers 225 lumens in Normal-On and Emergency operation. Outdoor wide throw distribution: 30° (3' path of egress) at a 7.5' mounting height with 1 FC Average.

4,000K correlated color temperature (CCT).

70 CRI.

ELECTRICAL — UVOLT (120 thru 347V, 50/60hz). Current-limiting charger maximizes battery life and minimizes energy consumption to provide low operating costs. Small battery chargers Certified in the CA Title 20 Appliance Efficiency Database.

Short-circuit protection — current-limiting charger circuitry protects printed circuit board from shorts. Regulated charge voltage maintains a stable charge voltage over a wide range of line voltages.

Prevents over/undercharging that shortens battery life and reduces capacity. Filtered charger input minimizes charge voltage ripple and extends battery life.

Photocell option (PEL) for normally on product in order to discontinue illumination during periods when ambient light is present. Photocell option (PEL) for normally on products allow the user to force lamp illumination by user control (external switch). When power is not connected to switched line, illumination will respond to internal daylight sensor. For switched line applications, no other types of products shall be connected on the switched leg.

Remote units (OELR) are normally off. Emergency only functionality with DC power from an external battery.

BATTERY: Sealed, maintenance-free nickel-cadmium or Lithium Iron Phosphate battery.

SELF-DIAGNOSTICS AND REMOTE TEST (SDRT OPTION): Automatic 24-hour recharge after a 90-minute discharge. Advanced electrical design provides constant light output throughout the entire discharge period. Brownout protection is automatically switched to emergency mode when supply voltage drops below approximately 80 percent nominal of 120, 220, 277 or 347. Other input voltages may vary. AC/LVD re-set allows battery connection before AC power is applied and prevents battery damage from deep discharge.

Self-Diagnostics: Continuously monitors AC functionality. Standard derangement monitoring will indicate disconnected battery, charger failure and displays green flashing indicator light while in emergency mode. Single multi-chromatic LED indicator to display two-state charging, test activation and three-state self-diagnostics.

Self-diagnostic testing: Five minutes every 30 days and 90 minutes annually. Diagnostic evaluation of lamps, AC to DC transfer, battery charging and condition of microprocessor. Automatic test is easily postponed for eight hours by activating manual test switch or use of remote tester (RTKIT accessory).

Manual testing: Test switch and remote tester (RTKIT accessory) provides manual activation of 60-second diagnostic testing for on-demand visual inspection. 90 minute manual testing can be enabled by pressing the test switch again while in test mode.

INSTALLATION — Wall mount: typically meets 7.5' to 14' mounting height from ground or floor. Power supplied by either mounting directly to a 4" square or 4" octagon j-box (wall mount) and accepts rigid or flex conduit.

LISTINGS — UL wet location listed standard at 32-122°F (0-50°C). Unit with CW battery (cold weather) listed for -22°F to 122°F (-30° to 50°C). Remote listed for -40°F to 122°F (-40° to 50°C). Meets or exceeds all applicable requirements for UL 924, NFPA 101 (current Life Safety code), NFPA 70 (NEC), NOM (Norma Oficial Mexicana), California Energy Commission Title 20 section 1605.3 (W)(4), FCC Title 47, Part 15, Subpart B and OSHA. List and labeled to comply with Canadian Standards C22.2 No. 141-10.

Government Procurement:

BAA - Buy America(n) Act: Product with the BAA option qualifies as a domestic end product under the Buy American Act as implemented in the FAR and DFARS. Product with the BAA option also qualifies as manufactured in the United States under DOT Buy America regulations.

BABA - Build America Buy America: Product with a BAA option also qualifies as produced in the United States under the definitions of the Build America, Buy America.

Please refer to www.acuitybrands.com/buy-american for additional information.

WARRANTY — 5-year limited warranty. (Battery is prorated). This is the only warranty provided and no other statements in this specification sheet create any warranty of any kind. All other express and implied warranties are disclaimed. Complete warranty terms located at: www.acuitybrands.com/support/warranty/terms-and-conditions

Note: Actual performance may differ as a result of end-user environment and application. All values are design or typical values, measured under laboratory conditions at 25 °C. Specifications subject to change without notice.

Catalog Number
Notes
Type

Lithonia Lighting Basics™

Die-Cast Architectural Emergency Light

AFB



without photocell (white)



with photocell (white)

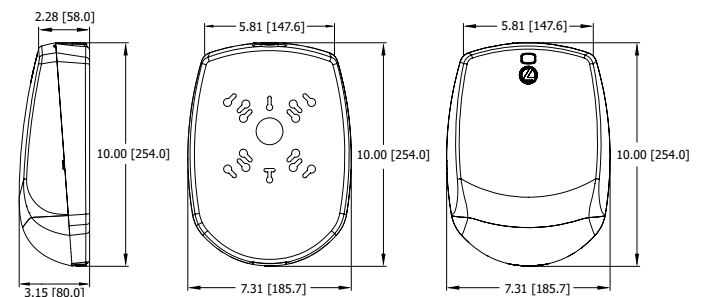


with photocell (dark bronze)

MOUNTING

All dimensions are inches (centimeters).
Shipping weight: 3.5 lbs. (1.59 kgs.)

Length: 7 3/10 (18.57)
Depth: 3 1/5 (8.00)
Height: 10 (25.45)
Weight : 3.5 lbs (1.59kg)



† Small Battery Chargers Certified in the CA Title 20 Appliance Efficiency Database.

AFB Lithonia Lighting Basics™ Die-Cast Architectural Emergency Light

SELF-POWERED MODELS

ORDERING INFORMATION

For the shortest lead times, configure product using **bolded options**.

Example: AFB PEL DWHGXD UVOLT N SDRT WT

Series	Unit Type ¹	Housing Color	Voltage	Battery Type	Automatic Testing	Optics	Options
AFB	PEL Photocell: Normally-ON with internal battery OEL Normally-OFF with internal battery	DWHGXD White textured DDBTXD Dark bronze textured	UVOLT 120-347VAC, 50/60Hz	N Nicad LTP Lithium Iron Phosphate ²	(blank) None SDRT Self-diagnostics remote test	WT Wide Throw	CW Cold Weather (-30 - 50C) ³ BAA Buy America(n) Act and/or Build America Buy America Qualified

Notes

- 1 AFB with internal battery is not remote capable.
- 2 Only available with CW (cold weather) option.
- 3 CW only available with LTP battery type.

REMOTE MODELS listed for -40°F to 122°F (-40° to 50°C)

ORDERING INFORMATION

For the shortest lead times, configure product using **bolded options**.

Example: AFB OELR DWHGXD WT

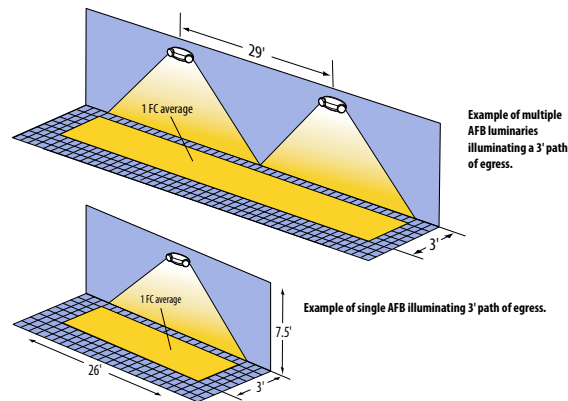
Series	Unit Type	Housing Color	Voltage	Optics	Options
AFB	OELR Remote fixture, Normally OFF (requires external battery source)	DWHGXD White textured DDBTXD Dark bronze textured	(blank) Universal DC voltage (8-30VDC)	WT Wide Throw ¹	BAA Buy America(n) Act and/or Build America Buy America Qualified

Notes

- 1 AFB OELR WT is 2.6 Watts.

Accessories: Order as separate catalog number.	
RTKIT	Remote test kit, up to 40' away (includes goggles, laser and battery)

AFB SPACING GUIDELINES



Maximum Spacing Guidelines - AFB

Mounting Height	Illumination Level	Single Luminaire		Multiple Luminaire		Application Notes *
		3' Path of Egress	6' Path of Egress	3' Path of Egress	6' Path of Egress	
7.5'	1FC Avg	26'	16'	29'	21'	200' Open Space 80/50/20 reflectances
10'		14'	N/A	22'	18'	
12'		N/A	N/A	18'	16'	
14'		N/A	N/A	14'	13'	

* Also meets the additional illumination requirements of NFPA 101: 1FC minimum and max/min ratio of 40:1.

SPECIFICATIONS

Electrical: Primary Circuit

Unit Type	Battery Type	Input Voltage(V)	Input Current(A)	Watts(W)
PEL	N	120-347	0.044-0.045	6.95
	LTP CW	120-347	0.075 -0.117	15.32
OEL	N	120-347	0.025-0.032	2.50
	LTP CW	120-347	0.069-0.094	11.11
OELR	N/A	8-30	0.081-0.509	2.55

BATTERY

Nicad					
Type	Voltage	Typical Shelf Life ¹	Typical Life ¹	Maintenance ²	Temperature range ^{3,4}
STD	6V	3 years	6-8 years	none	32 - 122°F (0 - 50°C)

BATTERY

Lithium Iron Phosphate					
Type	Voltage	Typical Shelf Life ¹	Typical Life ¹	Maintenance ²	Temperature range ^{3,4}
CW	12.8V	1 year	6-8 years	none	-22 - 122°F (-30 - 50°C)

Notes

- 1 At 77°F (25°C).
- 2 Battery life is negatively impacted by many variables including temperature, charging rates, number of cycles and deep discharges due to long periods of time without AC power.
- 3 All life safety equipment, including emergency lighting for path of egress must be maintained, serviced, and tested in accordance with all National Fire Protection Association (NFPA) and local codes. Failure to perform the required maintenance, service, or testing could jeopardize the safety of occupants and will void all warranties.
- 4 Temperature range where unit will provide capacity for 90 minutes. Higher and lower temperatures affect life and capacity. See option packages for expanded temperature ranges.



Catalog Number
Notes
Type

Contractor Select™

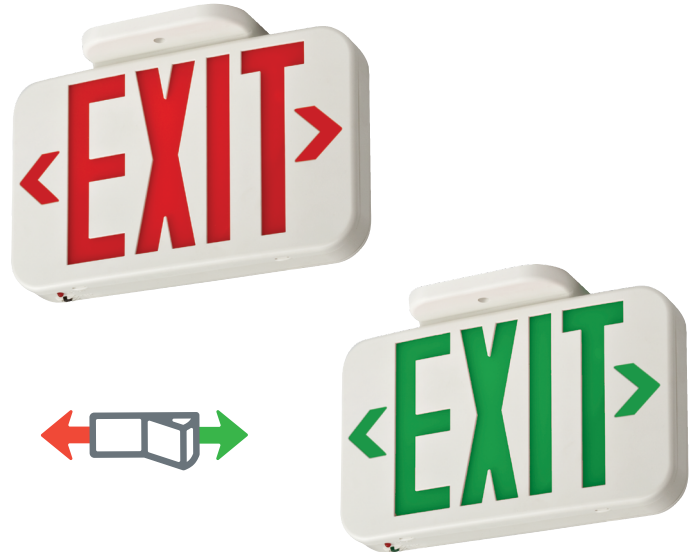
EXRG

Lithonia Lighting Basics™
LED Exit

The Lithonia Lighting Basics™ EXRG Exit Sign is suitable for emergency signage applications such as stairways and hallways. This fully assembled single-face exit with extra faceplate is available in red and green letters. It's low profile makes it ideal for safely illuminated the path of egress in small spaces and can be wall or ceiling mounted. The emergency power provides 90 minutes of illumination in the event of a power loss.

FEATURES:

- Internal toggle switch for red or green letter color selection
- Test switch and status indicator for low maintenance (EL emergency models only)
- UL indoor damp location 50° to 104°F (10°C to 40°C) listed standard
- For use with Dual voltage 120/277VAC
- Internal switch for color selection



† Exit Signs Certified in the CA Title 20 Appliance Efficiency Database.

Catalog Number	UPC	Description	Supply Voltage	Input Wattage		Input Amps		Pallet Qty	Carton Qty
				120	277	120	277		
EXRG M6	00194994900658	Red/Green Exit, AC Only	120/277	1W	1W	0.09	0.09	360	6
EXRG EL M6	00194994900696	Red/Green Exit with Ni-MH backup battery	120/277	1W	1W	0.09	0.09	360	6

Accessories¹: Order as separate catalog number.

ELA WG1 Wireguard (back mount only, 13 3/4"H x 15 1/4"W x 6"D)

NOTES

1. See spec sheet [ELA-WG](#) for more information.



Specifications

INTENDED USE:

LED lighted exit signs for marking the means of egress in accordance with Life Safety Code NFPA 101. The EXRG has an internal switch that ships standard as a red exit and can be switched in the field to green. It is also packaged standard with an extra faceplate along with red and green inserts.

CONSTRUCTION:

Injection-molded, flame-retardant, high-impact, thermoplastic housing with snap-fit design components for easy installation. Universal J-box pattern.

Ships with extra faceplate to quickly convert from single to double face exit sign depending on the application. Universal chevrons are easily removed for directional indication.

Letters 6" high with 3/4" stroke, with 100 ft viewing distance rating, based on UL924 standards.

OPTICS:

The typical life of the exit LED lamp is 5 years, based on 24/7 operation.

ELECTRICAL:

Dual-voltage input 120V or 277V AC. Non-emergency (AC only without battery) or Emergency exit with battery. The emergency model includes the test switch, status indicator and rechargeable battery.

Battery: (EL models) maintenance-free Nickel metal hydride battery provides 90 minutes of emergency power.

INSTALLATION:

Top, back or end mounting capability (canopy included).

LISTINGS:

UL Listed. Meets UL 924, NFPA 101 (current Life Safety Code), NFPA 70-NEC, FCC Title 47, Part 15, Subpart B and OSHA illumination standards. Indoor damp location 50° to 104°F (10°C to 40°C) listed standard.

WARRANTY:

2-year limited warranty. This is the only warranty provided and no other statements in this specification sheet create any warranty of any kind. All other express and implied warranties are disclaimed. Complete warranty terms located at:

www.acuitybrands.com/support/warranty/terms-and-conditions

All life safety equipment, including emergency lighting for path of egress must be maintained, serviced, and tested in accordance with all National Fire Protection Association (NFPA) and local codes. Failure to perform the required maintenance, service, or testing could jeopardize the safety of occupants and will void all warranties.

Note: Actual performance may differ as a result of end-user environment and application. All values are design or typical values, measured under laboratory conditions at 25 °C. Specifications subject to change without notice.

Dimensions

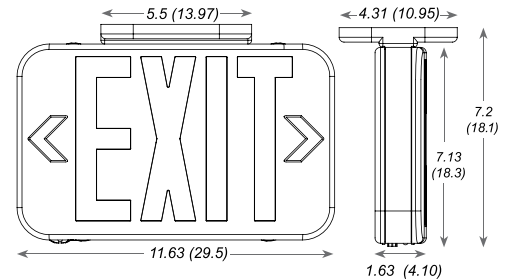
Length: 11.63 (29.5)

Depth: 1.63 (4.1)

Height: 7.2 (18.3)

Weight: EL: 1.6 LB

AC: 1.59 LB



All dimensions are inches (centimeters) unless otherwise indicated.

FEATURES & SPECIFICATIONS

INTENDED USE — Ideal one-for-one replacement of conventional lighting systems such as HID and fluorescent. For use in light Industrial applications such as, warehousing and other large indoor spaces with mounting heights ranging from 10' – permitted. **Certain airborne contaminants can diminish integrity of acrylic and LED's.** [Click here for Acrylic Environmental Compatibility table for suitable uses.](#)

Certain airborne contaminants may adversely affect the functioning of LEDs and other electronic components, depending on various factors such as concentrations of the contaminants, ventilation, and temperature at the end-user location. [Click here for a list of substances that may not be suitable for interaction with LEDs and other electronic components.](#)

CONSTRUCTION — Extruded aluminum channels enable superior thermal performance. Glare Control acrylic lens diffuses light source and reduces glare while protecting LEDs. Lens meets DLC 5.1 standards for UGR (Unified Glare Rating).

ELECTRICAL — 70% lumen maintenance at > 100,000 hours. Thermally protected driver standard with 0-10V dimming. Luminaire surge protection level: designed to withstand up to 6kV/3kA per ANSI C82.77-5-2015 Multi-volt driver, 120-277V standard.

INSTALLATION — Fixture is suitable for mounting by chain, cable, surface-mount bracket, pendant monopoint, or hook monopoint. Designed for use in ambient temperatures ranging from -40°C to 55°C when suspended 18" off ceiling. Surface mount to 45°C ambient operation.

LISTINGS — CSA listed. Damp location listed.

DesignLights Consortium™ (DLC) Premium qualified product. Not all versions of this product may be DLC Premium qualified. Please check the DLC Qualified Products List at www.designlights.org/QPL to confirm which versions are qualified.

BUY AMERICAN ACT — Product with the BAA option is assembled in the USA and meets the Buy America(n) government procurement requirements under FAR, DFARS and DOT regulations. Please refer to www.acuitybrands.com/buy-american for additional information.

WARRANTY — 5-year limited warranty. This is the only warranty provided and no other statements in this specification sheet create any warranty of any kind. All other express and implied warranties are disclaimed. Complete warranty terms located at: www.acuitybrands.com/support/warranty/terms-and-conditions

Note: Actual performance may differ as a result of end-user environment and application. All values are design or typical values, measured under laboratory conditions at 25 °C. Specifications subject to change without notice.

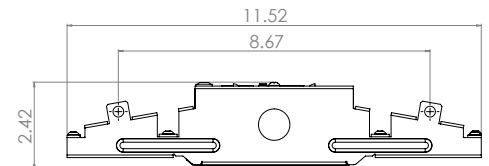
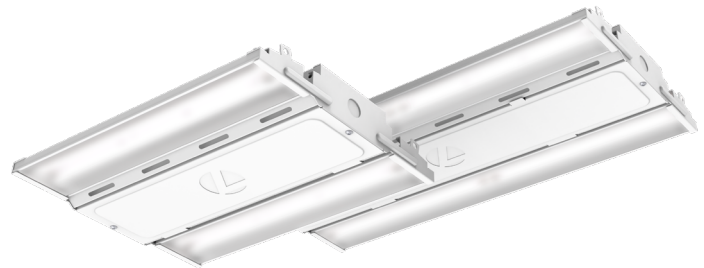
Standard Part Number	Stock Part Number	Stock Part Number CI Code	DLC Product ID	DLC Premium?
CPHB 12000LM SEF GCL MD MVOLT GZ10 40K 80CRI DWH	CPHB 12LM MVOLT 40K	*268SAH	PAMXQBT8	Yes
CPHB 12000LM SEF GCL MD MVOLT GZ10 50K 80CRI DWH	CPHB 12LM MVOLT 50K	*2681J0	P0Q23DMQ	Yes
CPHB 15000LM SEF GCL MD MVOLT GZ10 40K 80CRI DWH	CPHB 15LM MVOLT 40K	*2681J2	PLPPHUG	Yes
CPHB 15000LM SEF GCL MD MVOLT GZ10 50K 80CRI DWH	CPHB 15LM MVOLT 50K	*2681J5	PJ97Z0F9	Yes
CPHB 18000LM SEF GCL MD MVOLT GZ10 40K 80CRI DWH	CPHB 18LM MVOLT 40K	*268SAJ	PWHG1E01	Yes
CPHB 18000LM SEF GCL MD MVOLT GZ10 50K 80CRI DWH	CPHB 18LM MVOLT 50K	*2681J9	PSRNYSS1	Yes
CPHB 24000LM SEF GCL MD MVOLT GZ10 40K 80CRI DWH	CPHB 24LM MVOLT 40K	*2681JE	PC2IBASD	Yes
CPHB 24000LM SEF GCL MD MVOLT GZ10 50K 80CRI DWH	CPHB 24LM MVOLT 50K	*2681JL	P7DUT85I	Yes
CPHB 30000LM SEF GCL MD MVOLT GZ10 40K 80CRI DWH	CPHB 30LM MVOLT 40K	*2681JM	PRXQVN2Q	Yes
CPHB 30000LM SEF GCL MD MVOLT GZ10 50K 80CRI DWH	CPHB 30LM MVOLT 50K	*2681JP	PDAUA08P	Yes

Catalog Number
Notes
Type

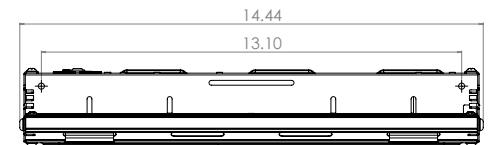
LED High Bay

COMPACT PRO™

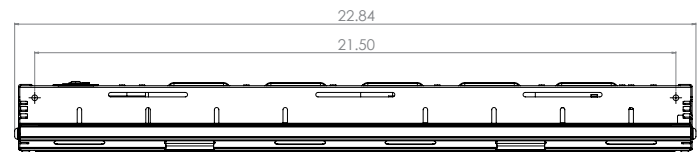
9,000 through 60,000 Lumens



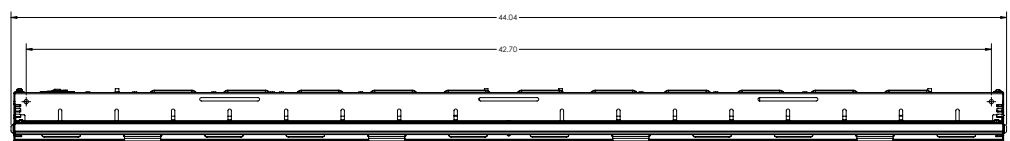
End View: CPHB 9000LM - 60000LM



Side View: 9000LM, 12000LM, 15000LM, 18000LM



Side View: 24000LM, 30000LM



Side View: 36000LM, 48000LM, 60000LM

CS

CONTRACTOR SELECT

Looking for Contractor Select readily available configurations? Click here to visit Contractor Select™ spec sheet or go to www.contractorselect.com

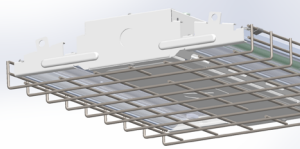
ORDERING INFORMATION

Lead times will vary depending on options selected. Consult with your sales representative.

Example: CPHB 24000LM SEF GCL MD 120 GZ10 40K 80CRI CPSBW LSXR6 HL DWH

CPHB						GCL						GZ10						
Series		Lumens		Performance Package		Lens		Distribution		Voltage		Driver		Color Temperature		Color Rendering Index		
CPHB	Compact Pro High Bay	9000LM	9,000 lumens	SEF	Standard Efficiency	GCL	Glare Control Lens	MD	Medium Distribution	MVOLT	120-277V	GZ10	0-10V dimming driver	35K	3500 K	70CRI	70 CRI	
		12000LM	12,000 lumens					120	120V		40K			4000 K	80CRI	80 CRI		
		15000LM	15,000 lumens	HEF	High Efficiency			ND	Narrow Distribution	208	208V				50K	5000 K	90CRI	90 CRI
		18000LM	18,000 lumens							240	240V							
		24000LM	24,000 lumens					WD	Wide Distribution	277	277V							
		30000LM	30,000 lumens							347	347V							
		36000LM	36,000 lumens							480	480V							
		48000LM	48,000 lumens							HVOLT	347-480V							
		60000LM	60,000 lumens															

Options			DWH
			Finish
BAA	Buy America(n) Act Compliant	<p><u>Individual Controls (LSXR): ‡</u></p> <p>LSXR6 360° integral high mount motion sensor with standard on/off operation</p> <p>LSXR6 HL 360° integral high mount motion sensor with high/low/(off) occupancy operation. For High/Low/(never off), bypass relay</p> <p>LSXR6 P 360° integral high mount motion sensor with on/off switching photocell</p> <p>LSXR6 ADC 360° integral high mount motion sensor with dimming & switching photocell</p> <p>LSXR6 ANL 360° integral high mount motion sensor with High/Low occupancy dimming & auto-dimming photocell</p> <p>*For 360° integral LOW MOUNT sensors, replace "6" in nomenclature with "10". For High Mount AISLEWAY sensors, replace "6" in nomenclature with "50". Ex: LSXR50 HL</p> <p><u>Individual Controls with Bluetooth Programming (Haleon): ‡</u></p> <p>HLN45 OCC 360° integral high mount motion sensor; Bluetooth enabled LINK</p> <p>HLN45 HL 360° integral high mount motion sensor with High/Low (Off) occupancy detection; Bluetooth enabled</p> <p>HLN45 ADC 360° integral high mount motion sensor. High / Low / Off occupancy operation with photocell; Bluetooth enabled</p> <p>HLN45 ANL 360° integral high mount motion sensor with High/Low occupancy and auto dimming / off functionality due to photocell; Bluetooth enabled</p> <p><u>nLight AIR Wireless Controls:</u></p> <p>NLTAIR2 RLSXR6 nLight AIR (wireless) gen 2 control device with high mount occupancy and daylight sensor</p> <p>NLTAIR2 RPP20 D nLight AIR (wireless) gen 2 control device (dimming & switching power pack)</p> <p>*For 360° integral LOW MOUNT sensors, replace "6" in nomenclature with "10". For High Mount AISLEWAY sensors, replace "6" in nomenclature with "50". Ex: RLSXR50</p> <p>NLTAIR2 RMSOD45 Embedded nLight AIR (wireless) gen 2 control device with high mount occupancy and daylight sensor LINK ‡</p> <p>*For 360° integral Low Mount sensors, replace "45" in nomenclature with "7". For high Aisle Mount sensors, replace "45" with "45A". Ex: NLTAIR2 RMSOD45A</p>	DWH Gloss White
<u>Emergency Options: ‡</u>			
E10WCP	10W emergency battery pack, Certified in CA Title 20 MAEDBS ‡		
E15WMCP	15W emergency battery pack, Certified in CA Title 20 MAEDBS ‡		
IE10WMCP	10W emergency battery pack, Certified in CA Title 20 MAEDBS ‡		
IE15WMCP	15W emergency battery pack, Certified in CA Title 20 MAEDBS ‡		
IE20WCPHE	Iota 20W emergency battery pack, Certified in CA Title 20 MAEDBS ‡		
ETS	Generator Transfer Device ‡		
WGX	Wireguard installed		
IMP	Integrated modular plug ‡		
SPD	Additional 10kV surge protection device ‡		
RRL__	RELOC®-Ready luminaire. (Not available with Haleon sensor options). See page 16 for ordering information		
OCS	RELOC® OnePass selectable cable 6' installed ‡		
OCS4C	RELOC® One Pass™ selectable cable 6' installed. ‡		
JP	Job Pack ‡		
<u>Cord Sets: ‡</u>			
CPSBW	6' white damp location cord with straight blade plug (voltage will match fixture, 120V or 277V only)		
CPTLW	6' white damp location cord with twist-lock plug (voltage will match fixture; Not avail with 208V or 240V)		
CNPW	6' white cord, no plug		
CNP4CW	6' white cord , 4 conductors (for use with battery)		
CNP5CDW	6' white cord, 5 conductors (includes dimming leads)		
For additional cord set offerings, see table on next page. Note: To get CPHB wired from the factory for 24/7 operation (via cords et or Reloc), with on/off controlled by sensor rather than switch, contact your factory representative to request the normal hot and unswitched hot wired together in the fixture. Consult local codes to determine if this is allowable.			

Accessories: Order as separate catalog number.		
Mounting:	Wire guards:	Cord sets for IMP option: ‡
IBAC120 M100 Aircraft cable 10' with hook (one pair)	WGCPHBSM Wire guard for CPHB (12000LM - 18000LM)	CS1WIMP Straight plug, 120V
IBAC240 M75 Aircraft cable 20' with hook (one pair)	WGCPHBMD Wire guard for CPHB (24000LM - 30000LM)	CS3WIMP Twist-lock, 120V
IBHMP Hook monopoint	WGCPHBLG Wire guard for CPHB (36000LM - 60000LM)	CS7WIMP Straight plug, 277V
CPHBMPSPM Pendant Monopoint splice box with 3/4" hub (for 9000LM - 18000LM)		CS11WIMP Twist-lock, 277V
CPHBMPMPMD Pendant Monopoint splice box with 3/4" hub (for 24000LM - 30000LM)		CS93WIMP 600V 50 white cord, no plug (no voltage required)
CPHBMPMLG Pendant Monopoint splice box with 3/4" hub (for 36000LM - 60000LM)		
ZACVH Aircraft 10' V hanger (one pair)		
HC36 Hanger chain, 36" (one pair)		
THUN J2 Tong hanger surface mount bracket ‡		

‡ Option Value Ordering Restrictions	
Option Value	Ordering Restrictions
18000LM	Not available with HVOLT. When 18000LM requires 347 or 480 volt; the fixture utilizes a step-down transformer.
347	Fixture includes an additional 10kV surge protector. When ordered with 18000LM, includes step down transformer.
480	Fixture includes an additional 10kV surge protector. When ordered with 18000LM, includes step down transformer.
90CRI	Not available with HEF options.
Cord Sets	Must specify voltage on cord sets with plugs. To get CPHB wired from the factory for 24/7 operation (via cords et or Reloc), with on/off controlled by sensor rather than switch, contact your factory representative to request the normal hot and unswitched hot wired together in the fixture. Consult local codes to determine if this is allowable.
Cord Sets for IMP	Fixture must be ordered with IMP option. All cord sets are 18/3, 6' white.
CPHBPMPSM/MD/LG	Pendant monopoint splice boxes will require wiring from access plate to splice box KO if power is being dropped through pendant conduit. Fixture does not have a KO in center to pull power out of driver channel through splice box.
Emergency Options	MVOLT only. May alter fixture construction. Consult line art for dimensions. Batteries not for use with surface mount or pendant mount option. If cord set is needed, use CNP4CW which will have normal hot and unswitched hot exiting cord set. Not available with IMP or ETS option.
E10WCP	MVOLT only. Max ambient operating temperature of 35°C. Includes an additional 10kV surge protector on the unswitched, battery hot.
E15WMCP	MVOLT only. Factory installation only. Not approved for field installation. Max ambient operating temperature of 35°C. Includes an additional 10kV surge protector on the unswitched, battery hot.
ETS	MVOLT only. Not available with cord sets or batteries. When sensor is required, use "ER" sensor option. Utilizes ETS 924 DR component. Includes an additional 10kV surge protector
HVOLT	Fixture includes an additional 10kV surge protector. Not valid with 18000LM.
IE10WMCP	Available with 347 or 480 only.
IE15WMCP	Available with 347 or 480 only. Not available for 9000LM, 12000LM, 15000LM, or 18000LM.
IMP	Not available with battery options, NLTAIR2 RPP20 D options, LSXR ER options, ETS, or NLTAIR2 RLSXR ER options. Sensors will be fixture pre-wired to fixture.
Individual Controls (LSXR)	Comes standard with SPD. This sensor configuration is suitable for minimum ambient temperature of 14°F (-10°C). Not available with other controls.
JP	Consult table on page 7 for details.
NLTAIR2 RMSOD	When HVOLT, 347, and 480 are ordered fixture utilizes fixture back pack. Not available with battery options when 347, 480 or HVOLT are ordered. Not available with ETS when ordered with 9000LM, 12000LM, 15000LM or 18000LM lumen packages. Available with EM option by adding EM to nomenclature. Ex: NLTAIR2 RMSOD45 EM. When EM option is ordered, not available with emergency battery packs.
OCS	Must specify voltage. Dry Location listed only. Not available with Battery Options.
OCS4C	Dry location listed only. Use when unswitched hot is required for battery pack options.
SPD	10kV surge protector standard with HVOLT, 347, 480, ETS, LSXR, RLSXR, RPP20, and battery options (on the unswitched, battery hot).
THUN J2	Order quantity required in multiples of two. 9000LM - 18000LM requires one per fixture, 24000LM - 60000LM requires two per fixture.

ADDITIONAL CORD SET OPTIONS

	Cord Set Nomenclature	Fixture Voltage	Description
12FT Options	CPSBW12FT	120	12', White cord, with NEMA 5-15 plug (120v, 15A, straight blade)
	CPSBW12FT	277	12', White cord, with NEMA 7-15 plug (277v, 15A, straight blade)
	CPTLW12FT	120	12', White cord, with NEMA L5-15 plug (120v, 15A, twist lock)
	CPTLW12FT	277	12', White cord, with NEMA L7-15 plug (277v, 15A, twist lock)
	CPTLW12FT	480	12', White cord, with NEMA L8-20 plug (480v, 20A, twist lock)
	CNPW12FT	Any	12', White cord, no plug, 3 conductors (BLK/WHT/GRN)
	CNP4CW12FT	Any	12', White cord, no plug, 4 conductors (for use with battery)
	CNP5CDW12FT	Any	12', White cord, no plug, 5 conductors for dimming - (BLK/WHT/GRN/PUR/GRY)

15FT Options	CPSBW15FT	120	15', White cord, with NEMA 5-15 plug (120v, 15A, straight blade)
	CPSBW15FT	277	15', White cord, with NEMA 7-15 plug (277v, 15A, straight blade)
	CPTLW15FT	120	15', White cord, with NEMA L5-15 plug (120v, 15A, twist lock)
	CPTLW15FT	277	15', White cord, with NEMA L7-15 plug (277v, 15A, twist lock)
	CNPW15FT	Any	15', White cord, no plug, 3 conductors (BLK/WHT/GRN)
	CNP4CW15FT	Any	15', White cord, no plug, 4 conductors (for use with battery)
	CNP5CDW15FT	Any	15', White cord, no plug, 5 conductors for dimming - (BLK/WHT/GRN/PUR/GRY)

PHOTOMETRICS

See www.lithonia.com.

PERFORMANCE TABLE

CPHB SEF	Glare Control Lens, Medium Distribution			
	Lumen Package	Wattage	Lumen Output	LPW
Delivered Lumens 4000K, 80CRI	9000LM	61	9,123	150
	12000LM	87	12,273	141
	15000LM	102	15,343	150
	18000LM	133	18,199	137
	24000LM	174	24,873	143
	30000LM	210	29,825	142
	36000LM	235	36,289	163
	48000LM	324	48,342	153
	60000LM	421	58,946	140

Delivered Lumens 5000K, 80CRI	9000LM	61	9,183	150
	12000LM	88	12,354	140
	15000LM	105	15,444	147
	18000LM	133	18,319	138
	24000LM	174	25,037	144
	30000LM	210	30,081	143
	36000LM	235	36,529	155
	48000LM	324	48,661	150
	60000LM	421	59,452	141

*Values shown are at 120V.

CPHB HEF	Glare Control Lens, Medium Distribution			
	Lumen Package	Wattage	Lumen Output	LPW
Delivered Lumens 4000K, 80CRI	9000LM	55	8,861	161
	12000LM	75	12,056	161
	15000LM	96	14,875	155
	18000LM	127	18,936	149
	24000LM	150	23,740	158
	30000LM	196	29,644	152
	36000LM	210	35,409	169
	48000LM	292	47,480	163
	60000LM	378	59,274	157

Delivered Lumens 5000K, 80CRI	9000LM	55	9,002	164
	12000LM	75	12,248	163
	15000LM	96	15,111	157
	18000LM	127	19,236	151
	24000LM	150	24,117	161
	30000LM	196	30,115	154
	36000LM	210	35,971	171
	48000LM	292	48,234	165
	60000LM	378	60,215	159

SCALING FACTOR TABLES

Multipliers	
ND	1.037
WD	1.004
WGX	0.95

CPHB CHARACTERISTICS

Lumen package	Wattage								Length	Width	Depth	Weight	Comparable light source
	Standard Efficiency (SEF)				High Efficiency (HEF)								
	120V	277V	347V	480V	120V	277V	347V	480V	Dimensions shown in inches (centimeters)			Shown in pounds (kg)	
9000LM	61	60	60	60	55	54	54	54	14.4 (36.6)	11.5 (29.2)	2.3 (5.8)	5 (2.2)	100W MH, 4-lamp T8 NBF
12000LM	88	88	88	87	75	74	74	74	14.4 (36.6)	11.5 (29.2)	2.3 (5.8)	5 (2.2)	175W MH, 4-lamp T8 HBF, 2-lamp T5HO
15000LM	105	104	104	103	96	95	95	94	14.4 (36.6)	11.5 (29.2)	2.3 (5.8)	5 (2.2)	200W MH, 6-lamp T8 NBF
18000LM	133	132	144	144	127	126	138	138	14.4 (36.6)	11.5 (29.2)	2.3 (5.8)	6.5 (2.9)	250W MH, 6-lamp T8 HBF, 4-lamp T5HO
24000LM	174	174	173	173	150	149	149	149	22.8 (57.9)	11.5 (29.2)	2.3 (5.8)	8 (3.6)	400W MH, 6-lamp T5HO
30000LM	210	209	208	208	196	194	194	194	22.8 (57.9)	11.5 (29.2)	2.3 (5.8)	8 (3.6)	575W MH, 10-lamp T8 HBF
36000LM	235	235	234	234	210	208	208	208	44 (111.8)	11.5 (29.2)	2.3 (5.8)	14 (6.35)	750W MH, 8-lamp T5HO
48000LM	324	322	320	320	289	287	286	285	44 (111.8)	11.5 (29.2)	2.3 (5.8)	14 (6.35)	875W MH, 10-lamp T5HO
60000LM	421	421	419	419	374	372	371	370	44 (111.8)	11.5 (29.2)	2.3 (5.8)	14 (6.35)	1000W MH

*Dimensions & weights shown for standard product configurations without optional components

PROJECTED LUMEN MAINTENANCE

Operating hours	10,000	20,000	30,000	40,000	50,000	60,000	70,000	80,000	90,000	100,000
Lumen maintenance factor	0.98	0.96	0.93	0.91	0.89	0.87	0.85	0.83	0.81	0.79

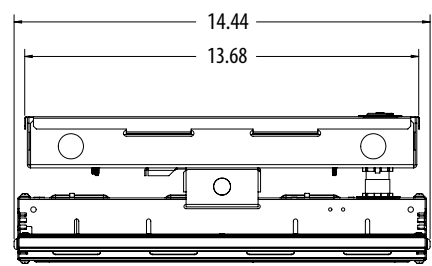
BATTERY INFORMATION

EMERGENCY BATTERY PACK OPTIONS

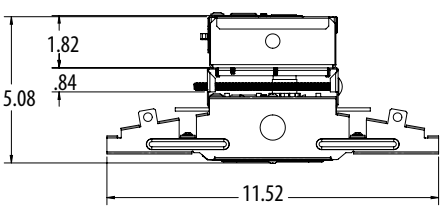
Nomenclature	Part Number
E10WCP	PS1055CP
E15WMCP	PS1555MCP
IE10WMCP	ILBHI-CP10-HE-SD-LC-STICK
IE15WMCP	ILBHI-CP15-HE-SD-LC-STICK
IE20WCPHE (with MVOLT)	ILBLP-CP20-HE-SD-HV
IE20WCPHE (with HVOLT)	ILBHI-CP20-HE-SD-HV

EMERGENCY LUMENS GCL, MD (5000K, 80CRI)			
SEF	Lumen Package	E10WCP	E15WMCP
	9000	1784	2738
	12000	1778	2729
	15000	1734	2701
	18000	1796	2744
	24000	1847	2845
	30000	1884	2868
	36000	1890	2915
	48000	1888	2912
	60000	1872	2853

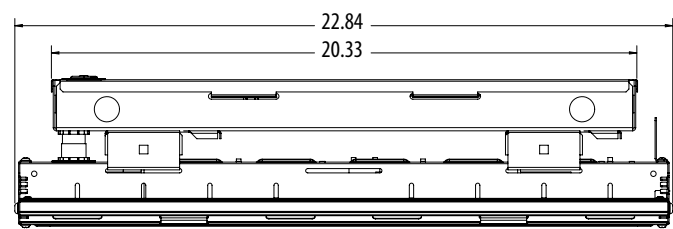
EMERGENCY LUMENS GCL, MD (5000K, 80CRI)			
HEF	Lumen Package	E10WCP	E15WMCP
	9000	1916	2911
	12000	1914	2909
	15000	1919	2914
	18000	1916	2898
	24000	1966	2984
	30000	1945	2952
	36000	2058	3125
	48000	2057	3124
	60000	2065	3137



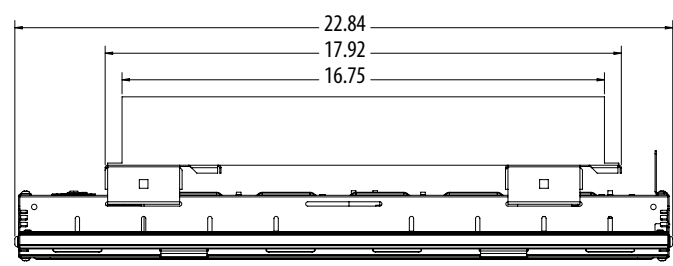
CPHB 9000LM - 18000LM WITH E10WCP/E15WMCP



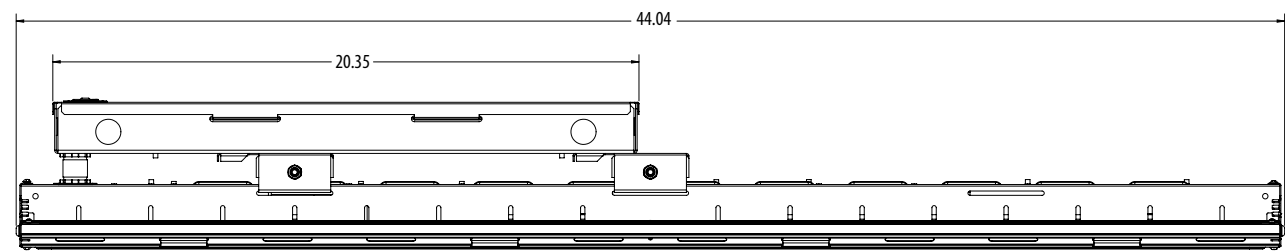
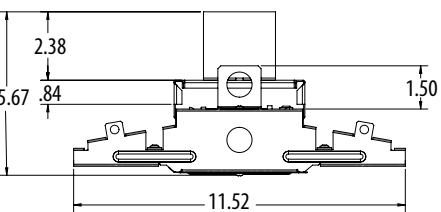
CPHB 9000LM - 60000LM WITH E10WCP/E15WMCP



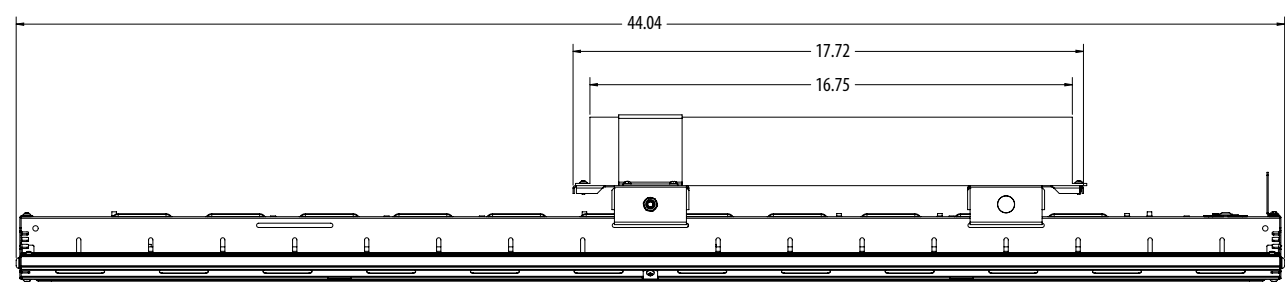
CPHB 24000LM - 30000LM WITH E10WCP/E15WMCP



CPHB 24000LM - 30000LM WITH IE20WCPHE

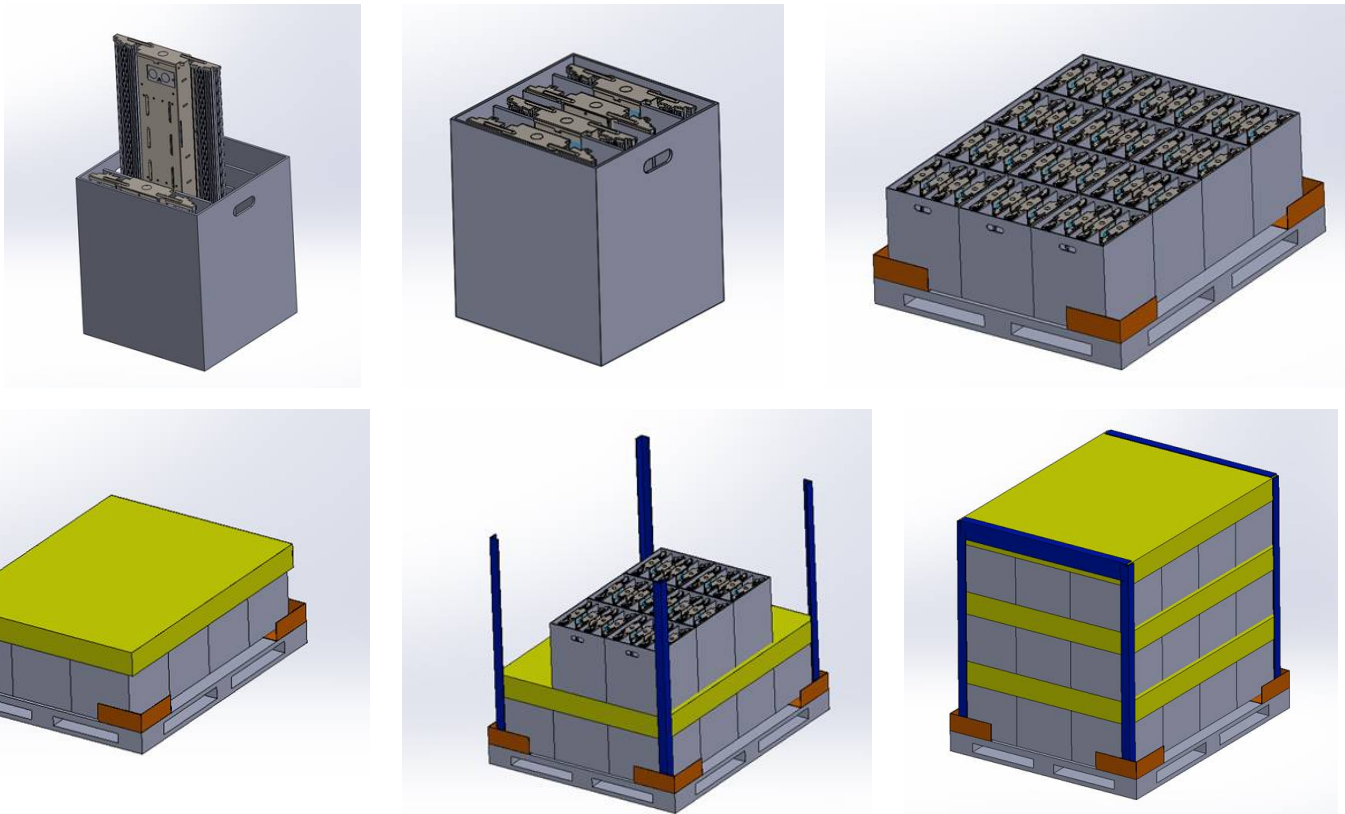


CPHB 36000LM - 60000LM WITH E10WCP/E15WMCP



CPHB 36000LM - 60000LM WITH IE20WCPHE

JOB PACK DETAILS



*Representative of Job Pack design for 14” standard units.

Series	Performance	Lumens	Standard Fixture	Cord Set or RELOC® JP	Wireguard JP	Sensor JP
CPHB	SEF/HEF	9000LM	144	144	144	90*
		12000LM				
		15000LM				
		18000LM				
		24000LM	96	96	96	60*
		30000LM				
		36000LM	45*	30*	30*	30*
		48000LM				
		60000LM				

*Traditional Job Pack

Breakout Example:		
Ordered Line:	Qty: 200	CPHB 24000LM SEF GCL MD MVOLT GZ10 40K 80CRI CNPW DWH JP
		*Above configuration shows 96 units for Job Pack
Breakout Line 1:	Qty: 192	CPHB 24000LM SEF GCL MD MVOLT GZ10 40K 80CRI CNPW DWH JP96
		*Will have 2 pallets of 96 units each in job packs
Breakout Line 2:	Qty: 8	CPHB 24000LM SEF GCL MD MVOLT GZ10 40K 80CRI CNPW DWH
		*Balance will ship in unit cartons

Note: If quantity ordered is less than Job Pack quantity for that configuration, the breakout line will default to unit packs.

STANDARD SENSOR

		Standard Sensor or Control Device (commonly used with Battery Pack Option)	EM Solution (Used when switching single incoming hot to generator power)	ER Solution (Used when switching to generator power via a 2nd hot lead)
Emergency Operation Scenarios	Emergency Lighting Strategy	*Luminaire-integral battery pack and emergency driver *Generator transfer device	*Diesel genset emergency backup supply *Slow transfer inverter (>30ms) emergency backup supply	*Fast Transfer (FT) inverter emergency backup supply *Uninterruptible Power System (UPS) emergency
	Recommended Control Device Option	*Not specifically listed for emergency use. *Wired such that a separately listed emergency device provides emergency lighting power and/or control during loss of normal power scenarios.	*UL 924 listed *EM devices will remain at their high-end trim and ignore wireless lighting control commands, such as in the event of a normal power failure, unless a normal-power-sensed (NPS) broadcast is received at least every 8 seconds. * Using the CLAIRITY+ mobile app, EM devices must be associated with a group that includes a normal power sensing device to receive NPS broadcasts. *Only non-emergency rPP20, rLSXR, rSBOR, rSDGR, and nLight AIR luminaires with version 3.4 or later firmware can provide normal power sensing for EM devices. See specification sheets for control devices and luminaires for more information on options that support normal power sensing.	*UL 924 listed *Utilizes dedicated Normal Power sensing leads to initiate lighting control override during loss of normal power scenarios. *Requires connections to both emergency and normal power circuits.

	Function	Sequence of Operations	Standard Sensor or Control Device	EM Solution (Generator / Inverter powered with 1 hot)	ER Solution (Generator / Inverter on separate emergency circuit - 2 hots)	CPHB Standard Sensor Settings				
						Vacancy Time Out	Dim to Off Time Delay	High Trim	Low Trim	Photocell Set Point
Standalone Sensors (Individual control per fixture)	On/Off	Lights turn on when motion detected; Upon vacancy, Lights turn off after timeout.	LSXR6	-	LSXR6 ER	10 min	-	-	-	-
	High/Low (Off)	Lights turn on to high trim when presence is detected; Upon vacancy, the lights dim to low trim after timeout and turn off after "Dim To Off" Time Delay. For High/Low (Never Off) function, bypass the relay by bringing power directly into driver rather than wiring hot through LSXR device.	LSXR6 HL	-	LSXR6 HL ER	10 min	2.5 min	100%	10% (Driver Low)	-
	Photocell	Lights turn on unless ambient light level is above set point; If ambient light levels in the space exceed the photocell set point, lights will turn off even during occupancy.	LSXR6 P	-	LSXR6 P ER	-	-	-	-	4 fc
	Dimming + Photocell	Lights turn on when presence is detected unless ambient light level is above set point; Upon vacancy, the lights dim to low trim, then turn off after timeout; During occupancy, automatically raise and lower electric light level to maintain set point and turn off, depending on ambient light.	LSXR6 ADC	-	LSXR6 ADC ER	10 min	2.5	-	-	4 fc
	Dimming + Photocell + High/Low	Lights turn on when presence is detected unless ambient light level is above set point; Upon vacancy, lights dim to low trim after timeout and remain at low trim until presence is detected; Automatically raise and lower electric light level to maintain set point during occupancy and during vacancy keeps lights at low trim if ambient light is not sufficient.	LSXR6 ANL	-	LSXR6 ANL ER	10 min	-	100%	10%	4 fc
Note: For 360° integral Low Mount sensors, replace "6" in nomenclature with "10". Ex. LSXR10 P. For High Aisle Mount sensors, replace "6" with "50".										

Bluetooth Sensors (Configurable via mobile Bluetooth app)	On/Off	Lights turn on when motion detected; Upon vacancy, Lights turn off after timeout.	HLN45 OCC	-	HLN45 OCC ER	10 min	-	-	-	-
	High/Low (Off)	Lights turn on to high trim when presence is detected; Upon vacancy, the lights dim to low trim after timeout and turn off after "Dim To Off" Time Delay.	HLN45 HL	-	HLN45 HL ER	10 min	2.5 min	100%	10%	-
	Dimming + Photocell	Lights turn on when presence is detected unless ambient light level is above set point; Upon vacancy, the lights dim to low trim during timeout; During occupancy, automatically raise and lower electric light level to maintain set point and turn off, depending on ambient light.	HLN45 ADC	-	HLN45 ADC ER	10 min	2.5 min	-	10%	50 fc
	Dimming + Photocell + High/Low (Never Off)	Lights turn on when presence is detected unless ambient light level is above set point; Upon vacancy, lights dim to low trim after timeout and remain at low trim until presence is detected; Automatically raise and lower electric light level to maintain set point during occupancy and during vacancy keeps lights at low trim if ambient light is not sufficient.	HLN45 ANL	-	HLN45 ANL ER	10 min	Never off due to occupancy	100%	10%	50 fc

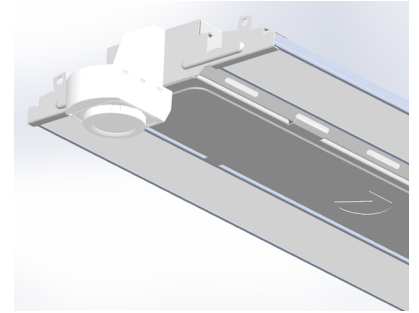
nLight AIR Wireless Sensors	Dimming + Photocell + Occupancy	Wirelessly programmable network sensor - On/Off control with dimming, occupancy detection, and daylight harvesting (Sensor embedded in fixture)	NLTAIR2 RMSOD45	RLSXR 6 EM	NLTAIR2 RMSOD45 ER	7.5 min	-	100%	30%	50 fc
	Dimming	Wirelessly programmable On/Off control with dimming - no sensor (Device embedded in fixture)	NLTAIR2 RIO	RPP20D EM	NLTAIR2 RIO ER	-	-	100%	10% (driver low)	-
Note: For 360° integral Low Mount sensors, replace "45" in nomenclature with "7". EM sensors/controls are KO-mounted; all others integral. RPP20 D EM de-rates fixture to Damp Location.										

*All ER solutions include standard sensor or control device with a factory-installed Iota ETS##-DR (UL924 bypass device). This device is integral to the fixture and will include a hot and neutral lead for the dedicated emergency circuit. MVOLT, 120-277 only. ER solutions are not available with the IMP option.

LSXR — Fixture Mount Occupancy Sensor (see www.AcuityControls.com for additional information)

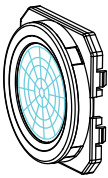
- Three interchangeable lens options to satisfy multiple mounting heights and coverage pattern requirements.
- Integrated mounting bracket drops lens down 3" from chase nipple.
- Single or dual relay versions — designed with robust protection from the harsh switching requirements of T5 and LED loads.
- Photocell and 0-10VDC dimming options.
- No PIR field calibration or sensitivity adjustments required.
- Sensor ambient temperature rating of 14°F (-10°C) to 131°F (55°C).

LSXR configuration	Comparable CMRB sensor	Old style sensor nomenclature
For shortest lead times use one of the following LSXR configurations		
LSXR50 / LC0ZU	CMRB 50	MSI
LSXR50 HL / LCH0SZU	CMRB 50 D	MSID
LSXR50 P / LCPZU	CMRB 50 P	MSIPED
LSXR6 / LA0ZU	CMRB 6	MSI360
LSXR6 HL / LAH0SZU	CMRB 6 D	MSI360D
LSXR6 P / LAPZU	CMRB 6 P	MSI360PED



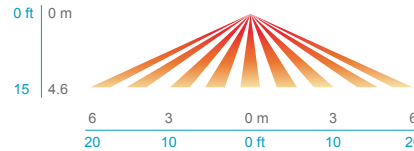
LSXR COVERAGE PATTERNS

HIGH MOUNT 360° LENS (#6)

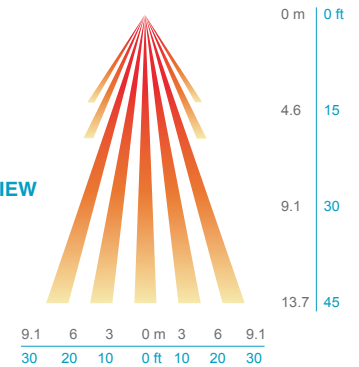


- Best choice for 15 to 45 ft (4.57 to 13.72 m) mounting heights
- 15 to 20 ft (4.57 to 6.10 m) radial coverage overlaps area lit by a typical high bay fixture
- Excellent detection of large motion (e.g. walking) up to a 35 ft (10.76 m) mounting height
- Excellent detection of extra large motion (e.g. forklifts) up to a 45 ft (13.72 m) mounting height

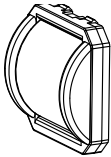
LOW VIEW



HIGH VIEW

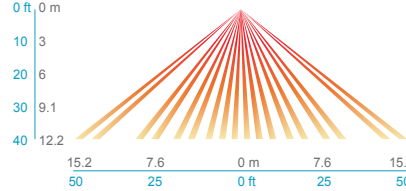


HIGH MOUNT AISLEWAY LENS (#50)

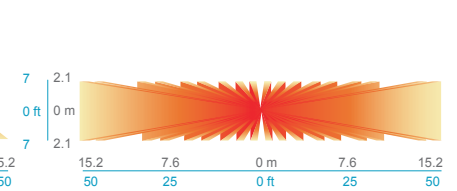


- Provides a bi-directional coverage pattern ideal for warehouse racking
- 1.2x mounting height equals approximated detection range in either direction
- Typical 40 ft (12.19 m) mounting detects 50 ft (15.24 m) in either direction
- Superior aisleway coverage compared to a masked 360° lens

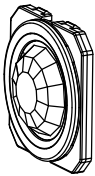
SIDE VIEW



TOP VIEW

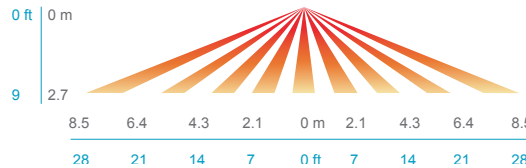


LOW MOUNT 360° LENS (#10)

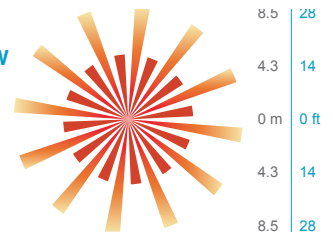


- Best choice for large motion detection (e.g. walking)
- 360° conical shaped pattern
- Provides ~24 ft (7.32 m) radial coverage (~2000 ft²) when mounted at 9 ft (2.74 m)
- 7 to 15 ft (2.13 to 4.57 m) mounting heights provide 16 to 36 ft (4.88 to 10.97 m) radial coverage
- Detection range improves when walking across beams compared to into beams

SIDE VIEW

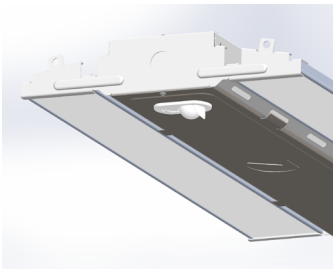


TOP VIEW



HALEON - Integrated Occupancy Sensor with Bluetooth® Programmability

- Programmable sensor settings over Bluetooth® with Acuity VLP smartphone app.
- Default programming options to service various application spaces - occupancy detection, 0-10V dimming and daylight harvesting.
- 360° High Mount and High Mount Aisleway lens detection options for mounting heights up to 40 ft.
- Integrated retractable lens mask included to block unwanted detection.
- Sensor ambient temperature rating of -40°F (-40°C) to 158°F (70°C).



Haleon Default Programming

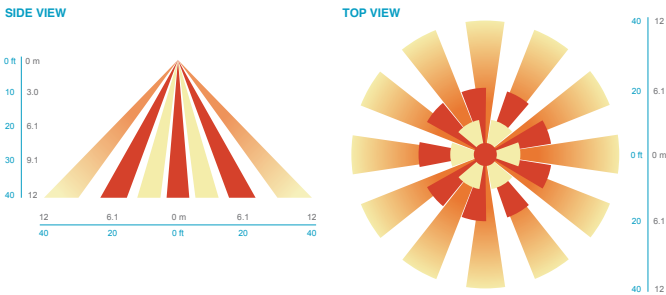
Model	Default Operation	LSXR Equivalent	Occupancy Time Delay	Photocell Mode	Photocell Set-point	Low Trim	High Trim	Dim to Off Time Delay
HLNxxx	On/Off Occupancy Only	LSXR6 LT or LA00STU	10 minutes	Disabled	n/a	n/a	100%	Disabled
HLNxxx HL	Occupancy w/ 0-10V Dimming (High/Low/Off)	LSXR6 HL LT or LAH0STU	10 minutes	Disabled	n/a	10%	100%	2.5 minutes
HLNxxx ADC*	Occupancy w/ Dim & Switch Photocell	LSXR6 ADC LT or LAM0STU	10 minutes	On/Off & Auto Dim	50 fc	10%	100%	2.5 min
HLNxxx ANL	Dim & Switch Photocell with High/Low Occupancy Operation	LSXR6 ANL LT or LAG0STU	10 minutes	On/Off & Auto Dim	50 fc	10%	100%	Stay Dim/ Never off due to occupancy

Note: Lens detection noted in place of 'xxx'
*HLN ADC includes a 2.5 minute dim to off not found in LSXR ADC.

HALEON COVERAGE PATTERNS

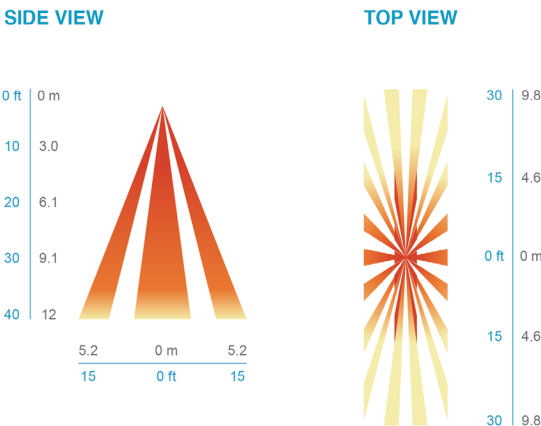
45- HIGH MOUNT 360°

- Optimized full coverage pattern for 10 – 50 ft. (3.1 – 12 m)
- Reliable detection of large motion (e.g. pedestrian walking traffic) up to 30 ft. (9.1 m) mounting height
- Reliable detection of extra-large motion (e.g. forklift traffic) up to 40 ft. (12 m) mounting height
- Stow-able rotating lens shield can be utilized to mask areas in which detection is not desired

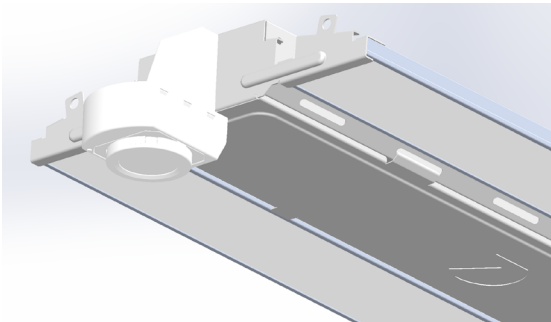


45A HIGH MOUNT AISLEWAY

- Optimized bi directional coverage pattern for aiseways with 10 – 50 ft. (3.1 – 12 m) mounting heights
- 1.2X's mounting height equals approximate detection range
- Reliable detection of large motion (e.g. pedestrian walking traffic) up to 30 ft. (9.1 m) mounting height
- Reliable detection of extra-large motion (e.g. forklift traffic) up to 40 ft. (12 m) mounting height
- Stow-able rotating lens shield can be utilized to mask areas in which detection is not desired

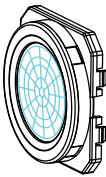


nLIGHT AIR CONTROLS - rLSXR



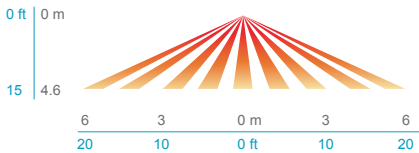
rLSXR COVERAGE PATTERNS

HIGH MOUNT 360° LENS (#6)

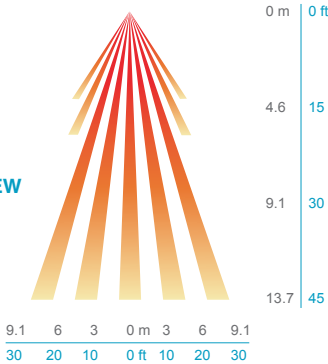


- Best choice for 15 to 45 ft (4.57 to 13.72 m) mounting heights
- 15 to 20 ft (4.57 to 6.10 m) radial coverage overlaps area lit by a typical high bay fixture
- Excellent detection of large motion (e.g. walking) up to a 35 ft (10.76 m) mounting height
- Excellent detection of extra large motion (e.g. forklifts) up to a 45 ft (13.72 m) mounting height

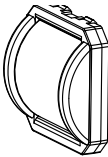
LOW VIEW



HIGH VIEW

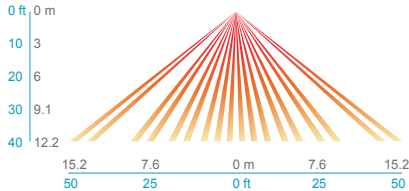


HIGH MOUNT AISLEWAY LENS (#50)

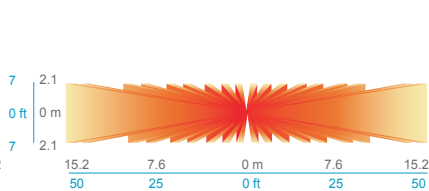


- Provides a bi-directional coverage pattern ideal for warehouse racking
- 1.2x mounting height equals approximate detection range in either direction
- Typical 40 ft (12.19 m) mounting detects 50 ft (15.24 m) in either direction
- Superior aisleway coverage compared to a masked 360° lens

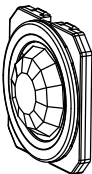
SIDE VIEW



TOP VIEW

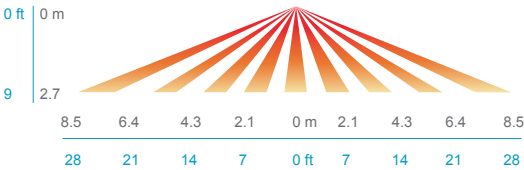


LOW MOUNT 360° LENS (#10)

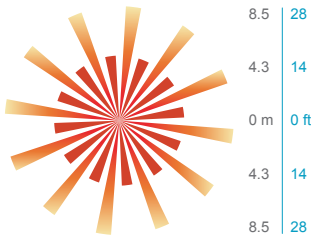


- Best choice for large motion detection (e.g. walking)
- 360° conical shaped pattern
- Provides ~24ft (7.32m) radial coverage (~2000ft2) when mounted at 9 ft (2.74 m)
- 7 to 15 ft (2.13 to 4.57 m) mounting heights provide 16 to 36 ft (4.88 to 10.97 m) radial coverage
- Detection range improves when walking across beams compared to into beams

SIDE VIEW

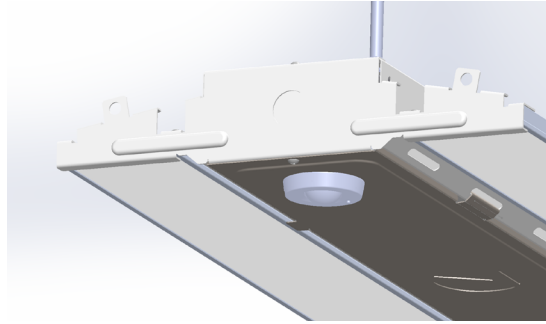


TOP VIEW



RMSOD

- 100% digital PIR detection
- Combined daylight and occupancy sensor
- Fully dimmable via digital or analog dimming protocols, providing the right amount of light for the application and to optimize energy savings
- Optional UL 924 emergency functionality via EM option, which eliminates wiring for sensing normal power

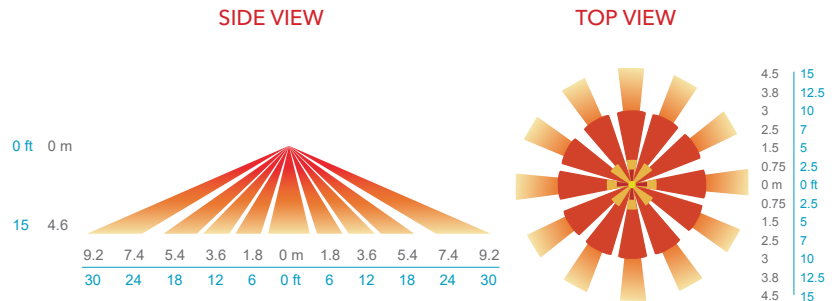


COVERAGE PATTERN

Lens rotates 15 deg to enable adjustment. Initial detection will occur earlier when walking across sensor's field of view than when walking directly at sensor.

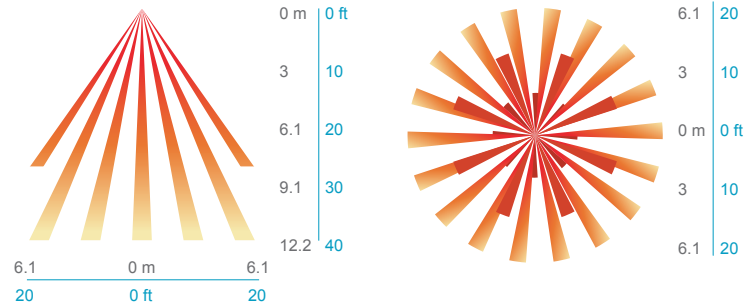
7 - MINI LOW-BAY 360°

- Recommended for walking motion detection from mounting heights between 8 ft (2.44 m) and 20 ft (6.10 m)
- Initial detection of walking motion along sensor axis at distances of 2x the mounting height up to 15 ft (4.57 m) and 1.75x up to 20ft (6.10 m).
- Provides 12 ft (3.66 m) radial detection of small motion when mounted at 9 ft (2.74 m)



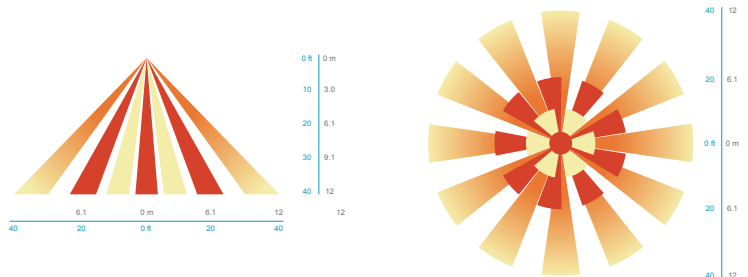
30 - UNIVERSAL 360°

- Provides excellent detection of large motion (e.g. walking) when mounted between 15 to 40 ft (4.57 to 12.19 m)
- 15 to 20 ft (4.57 to 6.10 m) radial coverage overlaps area lit by a typical high bay fixture
- Recommended for fixtures that have a 1:1 spacing to mounting height ratio or less (e.g. fixtures 30' on center or less @ a 30' mounting height.)



45 - HIGH MOUNT 360°

- Optimized full coverage pattern for 10 – 40 ft. (3.1 – 12 m)
- Reliable detection of large motion (e.g. pedestrian walking traffic) up to 30 ft. (9.1 m) mounting height
- Reliable detection of extra-large motion (e.g. forklift traffic) up to 40 ft. (12 m) mounting height



IMP - Integrated Modular Plug

- The integrated modular plug (IMP) option allows the installer to plug and play a multitude of accessories.
- Cord sets connect quickly to any fixture with IMP option.
- IMP accessories include occupancy sensors, photocells, X-point relays.

IMP compatible cord sets ¹	
CS1WIMP	Straight plug, 120V
CS3WIMP	Twist-lock, 120V
CS7WIMP	Straight plug, 277V
CS11WIMP	Twist-lock, 277V
CS25WIMP	Twist-lock, 347V
CS93WIMP	600V SE00W white cord, no plug
CS97WIMP	Twist-lock, 480V

IMP compatible sensors	
MSIIMP	Aisle sensor
MSI360IMP	360° sensor

Ordering Example

Order As: Qty 1 - IBG 12000LM SEF AFL GND 120 GZ10 40K 80CRI IMP CP5BW DWH
Ships As: Qty 1 - IBG 12000LM SEF AFL GND MVOLT GZ10 40K 80CRI DWH
Qty 1 - CS1WIMP

Notes
1 Cord set required for fixture operation. All cord sets are 18/3, 6' white.

RRL - RELOC®-Ready Luminaire

- RRL connectors to be used with the OnePass system.
- Load side of connector factory installed to luminaire.
- 4-pole mating connector with push-in terminations allows for simple installation.
- Touch-safe design on both halves meets UL/CSA requirement.
- Wiping contact design allows safe disconnect under load.



ORDERING INFORMATION

Lead times will vary depending on options selected. Consult with your sales representative.

Example: RRLA

Series	Wiring instructions
RRL RELOC®-ready luminaire	A Hot conductor wired to position #1 (phase A); non-dimming B Hot conductor wired to position #2 (phase B); non-dimming AE Hot conductor wired to position #1 (phase A), hot conductor #2 wired to position #2 (phase B); non-dimming ¹ C12S Hot conductor in position #1 (phase A), low voltage conductor #1 in position #2, low voltage conductor #2 in position #3; dimming ²

Compatible RELOC® Cables for Industrial Luminaires (ordered and shipped separately)
(click to view RELOC product page for more information)



Notes
1 AE commercial fixtures should disconnect the TSPL before unplugging the RRL so it does not go into discharge mode. Requires fixture to have battery option.
2 C12S option is used with the OnePass for 0-10V/DALI applications. Not for use with dimming sensors.

DC100 – ALUMINUM COVER

⊙ ROUND COVER



INCLUDES:

⊙ x 1 neoprene gasket

🔩 x 2 brass screws

CONSTRUCTION

- Die cast aluminum cover with one 1/2" opening.
- Silver grey finish is standard.

FEATURES

- Package includes cover, neoprene gasket and two brass screws.

ALSO AVAILABLE IN:

□ White

■ Black

■ Bronze

APPLICATION:

🏭 Ideal for industrial or commercial use

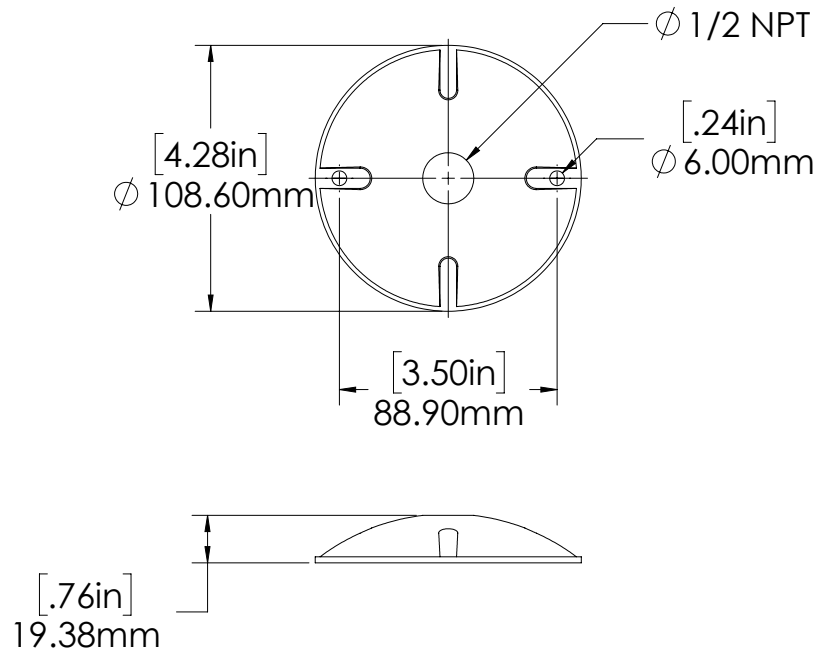
☀️❄️ Weather resistant

CERTIFICATION:





DIMENSIONS



ORDER INFO

STOCK CODE / DESCRIPTION

095776 DC100 - GREY COVER - 1 X 1/2" ENTRY

095794 DC100 - BLACK COVER - 1 X 1/2" ENTRY





095795 DC100 - BRONZE COVER - 1 X 1/2" ENTRY

095796 DC100 - WHITE COVER- 1 X 1/2" ENTRY

DVXJ – ALUMINUM BOX

 ROUND BOX

INCLUDES:

-  x 4 threaded plugs (installed)
-  x 1 neoprene gasket
-  x 1 ground screw
-  x 2 brass cover screws
-  x 1 stamped aluminum cover

CONSTRUCTION

- 4" standard cast aluminum box with 5 X 1/2" or 3/4" threaded entries.
- Each unit has two opposing mounting feet, 4 internal posts for mounting covers and 2 additional posts for universal cross bars.
- All posts 10-24 tapped.

FEATURES

- Sandblasted aluminum finish is standard.
- Product includes stamped aluminum cover.

ALSO AVAILABLE IN:

 White Black Bronze

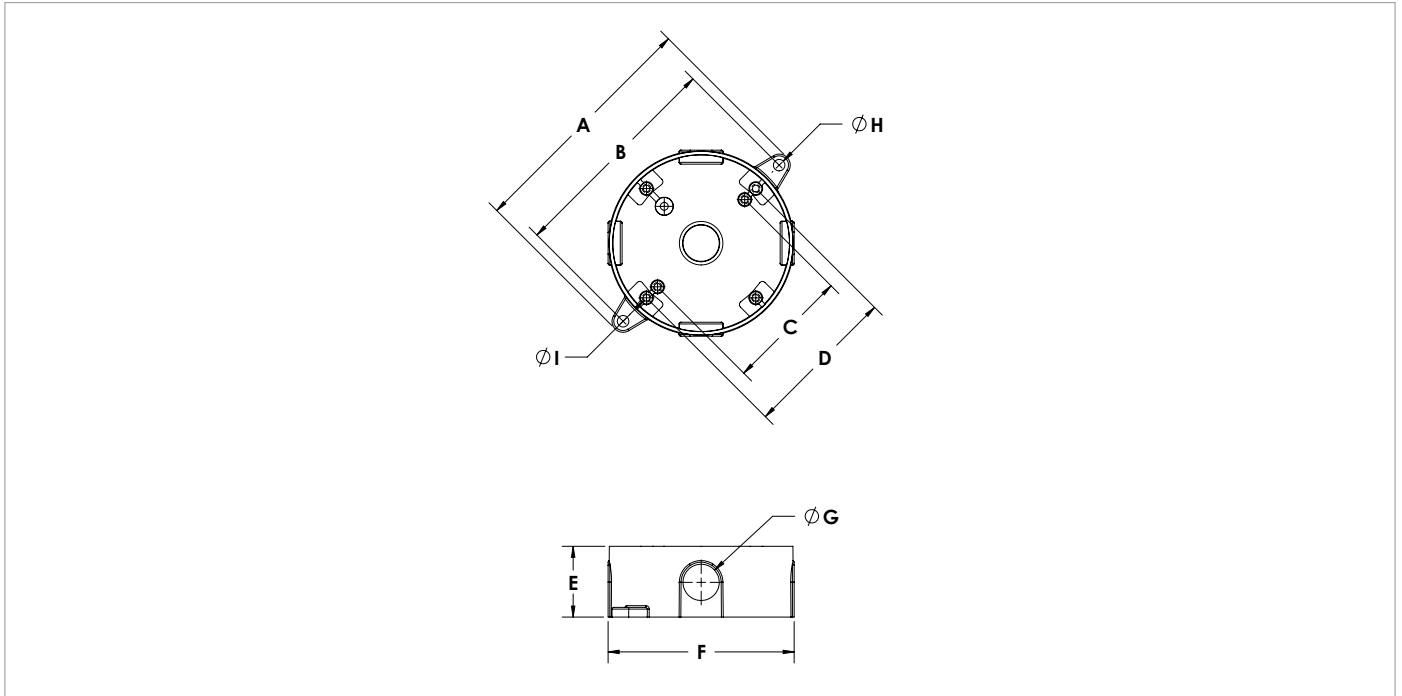
APPLICATION:

 Ideal for industrial or commercial use Weather resistant

CERTIFICATION:



DIMENSIONS



PRODUCT	A (IN.)	B (IN.)	C (IN.)	D (IN.)	E (IN.)	F (IN.)	G CONDUIT ENTRY	H (IN.)	I SCREW HOLES
1/2 DVXJ	5.5	5	2.795	3.5	1.604	4.213	1/2 NPT	0.26	10-24
3/4 DVXJ	5.5	5	2.795	3.5	1.604	4.213	3/4 NPT	0.26	10-24

ORDER INFO

STOCK CODE / DESCRIPTION

095770 1/2DVXJ/C - SANDBLASTED ALUM. WITH COVER

095800 1/2DVXJ/C - BLACK WITH COVER

095801 1/2DVXJ/C - BRONZE WITH COVER

095802 1/2DVXJ/C - WHITE WITH COVER

095772 3/4DVXJ/C - SANDBLASTED ALUM. WITH COVER



Catalog Number
Notes
Type

Contractor Select™

TWR LED

LED Wall Pack

Adjustable+Switchable+Photocell

The Lithonia Lighting® TWR wall packs combine the power of the latest generation of LEDs in a popular and classic day-form to provide exceptional energy savings. These wall packs give ultimate versatility to both the distributor and contractor by offering 18 configurations in one product with their standard Adjustable Lumen Output (ALO), Switchable color temperature (SWW2), and adjustable photocell (PE) features.

FEATURES:

- Two sizes deliver from 2,300 lumens up to 16,100 lumens, replacing 70W to 400W HID luminaires
- Energy savings of up to 86% when replacing HID wall packs with less than two year paybacks
- Three power levels of adjustable lumen output. Switchable CCT(3000K/4000K/5000K) offers warm, cool and daylight in a single fixture
- Standard photocell can be turned on or off
- IP65 rated, Die-cast aluminum housing and borosilicate glass lens
- Up to 155 LPW



Adjustable Lumen Output
ALO



Switchable CCT
SWW2



Dusk-to-Dawn Operation
PE



Catalog Number	Adjustable Lumen Output ALO			Switchable CCT SWW2	Dusk-to-Dawn Operation PE	Input Voltage	CRI
TWR1 LED ALO SWW2 UVOLT PE DDBTXD	2,300 Lumens	5,300 Lumens	8,500 Lumens*	Switchable 3000K, 4000K*, 5000K	Included Standard, Selectable On*/Off	120-347V	80CRI
TWR2 LED ALO SWW2 UVOLT PE DDBTXD	8,200 Lumens	12,100 Lumens	16,100 Lumens*				

* - Default out of the box settings

Made To Order Options

Ci Code	Input Voltage	Catalog Number	UPC	Number of fixtures per pallet	Traditional Replacement
*280GX1	120-277V	TWR1 LED ALO SWW2 MVOLT PE E7WC DDBTXD	00196183389954	60	70W - 250W HID
*2822T3	480V	TWR2 LED ALO SWW2 480 DDBTXD	00196183765819	32	250W - 400W HID

* Note: Made to order options are available with normal lead time

TWR LED Stock Configurations

Catalog Number	UPC	Ci Code	Number of fixtures per pallet	Traditional Replacement
TWR1 LED ALO SWW2 UVOLT PE DDBTXD	00196183389947	*280GWW	50	70W - 250W HID
TWR2 LED ALO SWW2 UVOLT PE DDBTXD	00196183390028	*280GX5	40	250W - 400W HID



Specifications

INTENDED USE:

The TWR LED combines traditional wall pack design with latest generation LEDs to provide an energy-efficient, low maintenance LED wall pack suitable for replacing up to 400W Metal Halide fixtures. The traditional shape helps maintain building aesthetics when replacing only a portion of your building's wall packs. TWR LED is ideal for outdoor applications such as carports, loading areas, self storage and parking areas.

CONSTRUCTION:

Rugged cast-aluminum housing with bronze polyester powder paint for lasting durability. Door is hinged on the side and can be detached for easy installation and service. Castings are sealed with a one-piece gasket to inhibit the entrance of external contaminants. Rated for outdoor installations, -40°C minimum ambient.

ELECTRICAL:

Light engine consists of long-life, high-efficacy LEDs mounted on an internal aluminum heat sink to maximize heat dissipation and promote long life. LEDs maintain 90% of light output at 50,000 hours of service. (LED lifespan based on IESNA LM-80-08 results and calculated per IESNA TM-21-11 methodology. The UVOLT driver operates on any line voltage from 120-347V (50/60Hz). All luminaires have 6kV surge protection. There are no user serviceable parts. The fixture is supplied with a 0-10V driver and is dimmable by 0-10V controls.

BATTERY SPECS:

Emergency battery backup E7WC is a 7 Watt back up battery that delivers up to 1,000 lumens in emergency mode. The lowest operating temperature is -20°C and is compatible with the MVOLT model TWR1.

INSTALLATION

Designed for wall mounting above four feet from ground. Housing is configured for mounting directly over a standard 4" outlet box (by others) or for surface wiring via any of four convenient 1/2" threaded conduit entry hubs.

LISTINGS:

UL Listed to U.S. and Canadian safety standards for wet locations. Tested in accordance with IESNA LM-79 and LM-80 standards.

DesignLights Consortium® (DLC) Premium qualified product and DLC qualified product. Not all versions of this product may be DLC Premium qualified or DLC qualified. Please check the DLC Qualified Products List at www.designlights.org/QPL to confirm which versions are qualified.

WARRANTY:

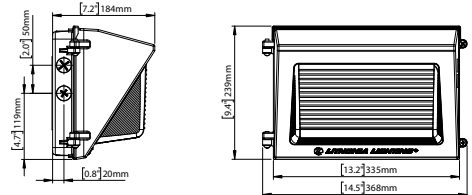
5-year limited warranty. This is the only warranty provided and no other statements in this specification sheet create any warranty of any kind. All other express and implied warranties are disclaimed. Complete warranty terms located at: www.acuitybrands.com/support/warranty/terms-and-conditions

Note: Actual performance may differ as a result of end-user environment and application. All values are design or typical values, measured under laboratory conditions at 25 °C. Specifications subject to change without notice.

Dimensions

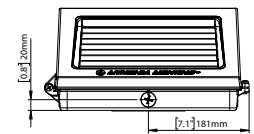
TWR1:

Width: 13.2" / 33.5cm
Height: 9.4" / 23.9cm
Depth: 7.2" / 18.4cm
Weight: 7.5lbs (3.4kg)



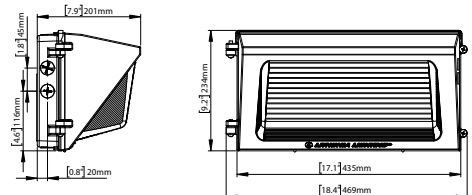
TWR1 E7WC:

Width: 15.25" / 38.74cm
Height: 10.75" / 27.31cm
Depth: 8.75" / 22.23cm
Weight: 9.66lbs (4.38kg)

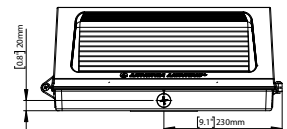


TWR2:

Width: 17.1" / 43.5cm
Height: 9.2" / 23.4cm
Depth: 7.9" / 20.1cm
Weight: 12.1lbs (5.5kg)



All dimensions are inches (centimeters) unless otherwise indicated.





LUMEN OUTPUT:

Lumen values are from photometric tests performed in accordance with IESNA LM-79-08. Data is considered to be representative of configurations shown within the tolerances described within LM-79.

Size	Lumen Output	Input Wattage	CCT/80CRI	Delivered Lumens	Lumens Per Watt @ 4000K, 80CRI
TWR1	2,300	16W	3000K	2,295	145
			4000K	2,292	
			5000K	2,359	
	5,300	36W	3000K	5,277	151
			4000K	5,347	
			5000K	5,390	
	8,500	59W	3000K	8,400	148
			4000K	8,581	
			5000K	8,523	

Size	Lumen Output	Input Wattage	CCT/80CRI	Delivered Lumens	Lumens Per Watt @ 4000K, 80CRI
TWR2	8,200	55W	3000K	8,132	155
			4000K	8,427	
			5000K	8,290	
	12,100	82W	3000K	11,875	152
			4000K	12,449	
			5000K	12,037	
	16,100	112W	3000K	15,794	147
			4000K	16,270	
			5000K	16,262	